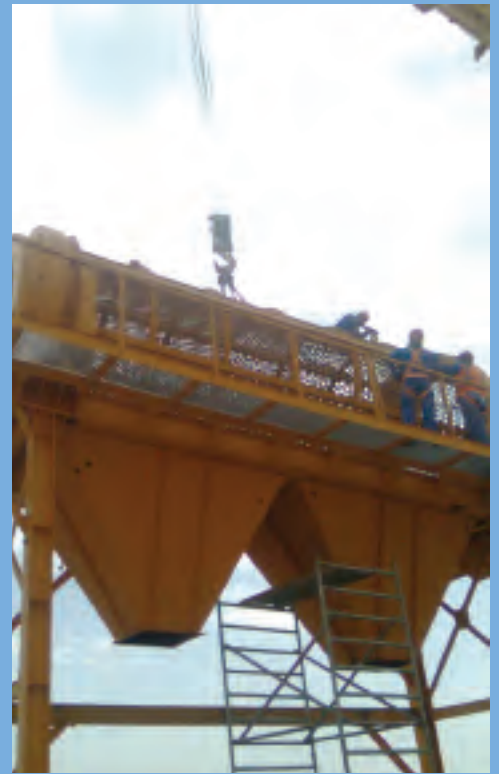


TM طهماس للمكائن و قطع الغيار ذ.م.م.
TAHMAS MACHINERY & SPARE PARTS L.L.C.

OEW المحيط للأعمال الهندسية
Ocean Engineering Works







طه‌ماس للمكائن و قطع الخيار ذ.م.م.
TAHMAS MACHINERY & SPARE PARTS L.L.C.

Company Profile

Tahmas Machinery was established in 2002 and deals with trading of stone crushing equipment. We stock and supply standard components and spare parts of stone crushing and material handling equipment such as gear boxes, backstops, electric motors, unbalanced motors for vibrators, conveyor system and conveyor rollers, compression springs, pulleys, plummer blocks in addition to other items.

Exact planning and execution is essential for making a successful rock crusher plant. We, with advanced engineering and with keen understanding about your needs provide exceptional technical know-how and other allied services. We provide consultancy regarding stone crushing equipment and quarries as well.

Centralized in Dubai, Tahmas Machinery & Spare Parts L.L.C. renders its technical expertise in the stone crushing industrial sector in U.A.E. Our extensive experience in design, fabrication, installation, operation and maintenance of stone crushing plants & equipment along with a team of highly skilled and motivated technical personnel makes us a more reliable partner in the industry.



Company Profile

Established in 2004, Ocean Engineering Works deals with steel fabrication and manufacturing equipment for stone crusher plants. It consists of a steel fabrication workshop as well as machine and paint workshop; located in Touban, Fujairah. We undertake the design, procurement, fabrication, supply, erection and commissioning of various sizes and types of stone crushing plants, machineries, equipment like belt conveyors, vibrating screens & feeders, steel structures, grabbers, excavator buckets factory and workshop sheds and other steel fabricated items.



We also undertake various machining jobs, apart from overhauling, repairing, rebuilding and maintenance of equipment and machineries. Our team pursues nothing less than total consumer satisfaction by offering complete solutions right from idea conception to installation and commissioning. Ocean Engineering commits to provide advanced equipment and support services to our consumers.



ROCKMORE



ROCKMORE
INTERNATIONAL

Company Profile

Rockmore International is one of the world's leading manufacturers of top quality percussive rock drilling tools with headquarters in the USA and Austria. Rockmore's high-performance products include drill bits, DTH bits and hammers, extension and tunneling rods, integral and tapered rods, shank adapters and other drill tool accessories. With manufacturing centers in two hemispheres and distribution centers on nearly every continent Rockmore International provides a wide range of tools to mining, construction, tunneling, quarrying, and water well projects from North America to Asia, and from the Alps to the Andes.

For more than 60 years, Rockmore International has developed a distinctly streamlined, user-focused way of serving our broad range of customers. Rockmore prides itself on the ability to work with companies of all sizes, and in distinctly different industries and environments. From single drill-rig operators to multinational construction firms, the company ensures that its worldwide clients have quick access to its service, manufacturing and marketing expertise.



PORTFOLIO



AL AIN PROJECT



AL SHUWAIKH CRUSHER



AGBT



AL FUTTAIM TARMAC QUARRY



EMPIRE ROCK PROJECT



PRODUCTS

TROMMEL: is a screened cylinder used to separate materials by size- for example separating different sizes of crusher stone.



VIBRATING SCREEN: a device made with a screening surface, vibrated mechanically at high speed and used especially for screening ore/rocks, coal or other fine dry materials.



VIBRATING FEEDER: is an instrument that uses vibration to 'feed' materials to a process or machine. Vibratory feeders use both vibration and gravity to move materials.



GRIZZLY FEEDER

PRODUCTS

IMPACT CRUSHER: impact crushers use high force or in other words 'impact' rather than pressure to crush materials; such as stone/rock. These materials are held within a cage and then fine-grained materials are released through its opening, which can be found on the bottom, end or side depending on the desired size.

We manufacture three types of horizontal shaft impact crushers: PK- 40, PK-50 and PK-60



JAW CRUSHER: Jaw crushers also known as Jaw breakers is a machine used for breaking rocks using compressive force by two steel jaws, one fixed and the other oscillates (moveable). Jaw crushers are classified on the basis of the position the swing jaw pivots. Types of jaw crushers: Blake crusher, dodge crusher and universal crusher.

CONE CRUSHER: a cone crusher breaks rocks by squeezing the rock between an eccentrically gyrating spindle, which is covered by a wear resistance mantle, & the enclosing concave hopper, covered by a manganese concave. Large pieces of ore or any rock are broken once, and then fall to a lower position (due to the size of the rock being smaller) where they are broken again. This process continues until the pieces are small enough to fall through the narrow opening at the bottom of the crusher.



SAND WASH MACHINE: is sand washing equipment, combining the advanced techniques & the domestic physical conditions of sand industry. Sand wash machine has high cleanliness advantage, reasonable structure & high productivity. The transmission part is separated from the water & the fault rate of the sand wash machine; machine is further lower than the commonly used sand was machine, making the best upgraded equipment.



PRODUCTS

CONVEYOR BELT: a flexible endless strip of fabric or linked plates driven by rollers which are used to transport objects.



CONVEYOR DRUM: is a cylindrical steel shell with steel and plates shafts that are either welded or bossed.



ROLLER: a cylindrical tool/product used for rolling onto something for movement, smoothness or crushing.



CONVEYOR: a motor-driven material-handling machine designed to move the individual articles such as solids or free-flowing bulk materials over a horizontal, inclined, declined, or vertical path of travel with continuous motion.





 طهّاس للمكائن و قطع الغيار ذ.م.م.
TAHMAS MACHINERY & SPARE PARTS L.L.C.

Tel.: +971 4 2675379 / 2678850

Fax: +971 4 2675378

Email: tahmasmachinery@hotmail.com

Email: info@tahmasmachinery.com

P.O. Box: 1353 & 237802

Al Fahad Building, Office 212, Qusais, Dubai, UAE

Website: www.tahmasmachinery.com

 المحيط للأعمال الهندسية
Ocean Engineering Works

Tel: + 971 6 8836377

Fax: +971 6 8827197

Email: tahmasmachinery@hotmail.com

Email: info@tahmasmachinery.com

P.O. Box: 3262

Touban Industrial Area, Fujairah, UAE

Website: www.tahmasmachinery.com